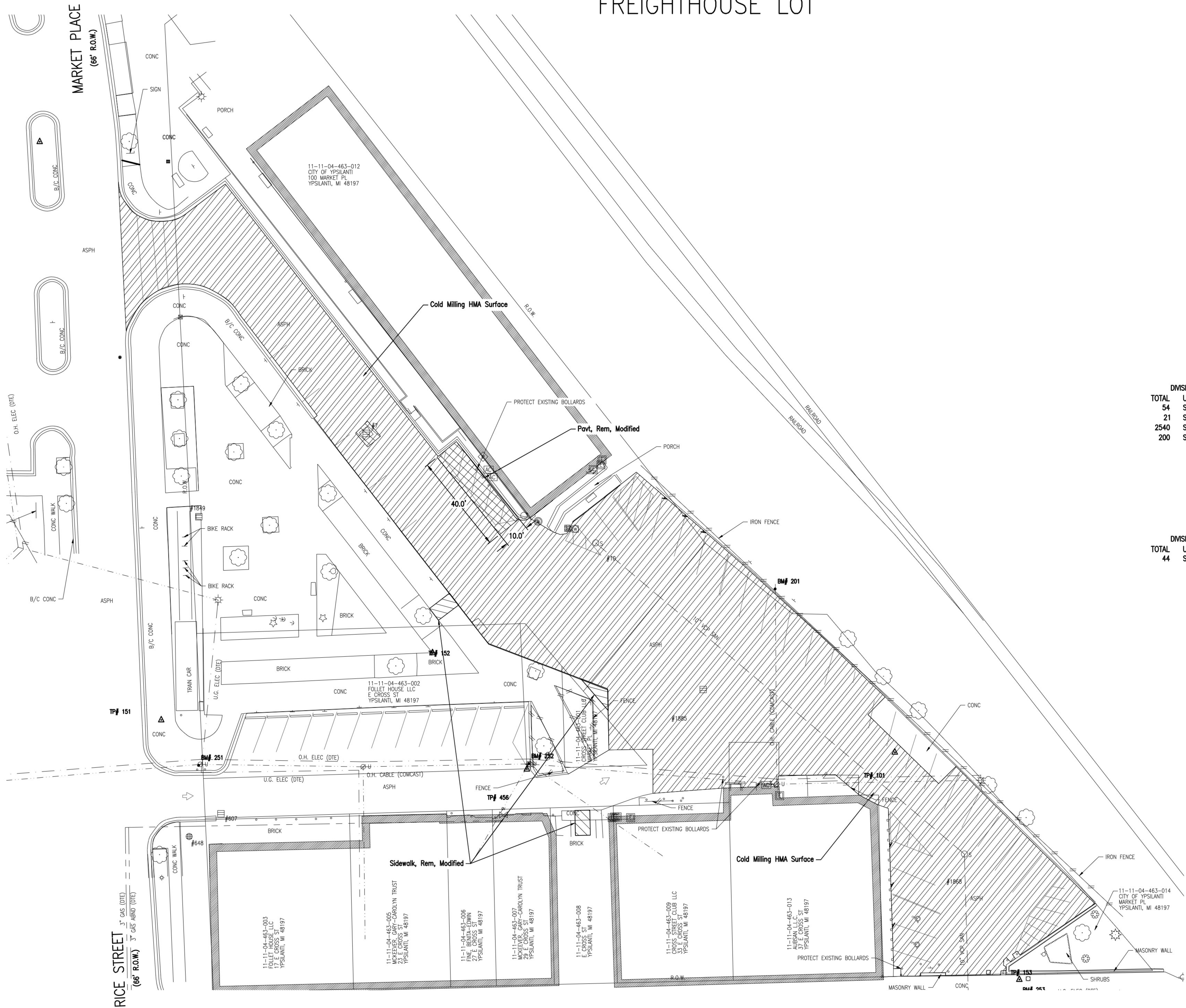
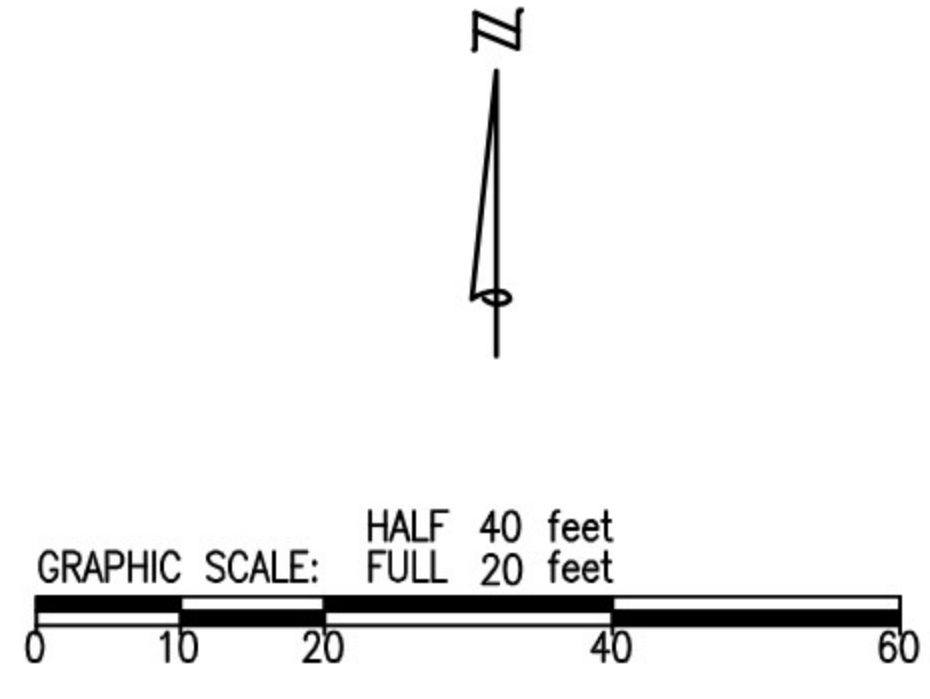


# FREIGHTHOUSE LOT



**DIVISION B - QUANTITIES THIS SHEET**

TOTAL	UNIT	DESCRIPTION
54	Syd	Pavt, Rem, Modified
21	Syd	Sidewalk, Rem, Modified
2540	Syd	Cold Milling HMA Surface
200	Syd	Full Depth Patch, Rem, Modified

**DIVISION C - QUANTITIES THIS SHEET**

TOTAL	UNIT	DESCRIPTION
44	Syd	Cold Milling HMA Surface

ISSUED FOR:	CHANGE ORDER NO. 1	DATE
REVISION	DESCRIPTION	
8/26/2025	BID SUBMITTAL	
10/4/2025	ADDENDUM NO. 1	
04/07/2026	CHANGE ORDER NO. 1	

PROJECT NUMBER: PM RU  
084425-0070

**CITY OF YPSILANTI**  
**FREIGHTHOUSE LOT REHABILITATION**  
YPSILANTI, MI

**REMOVAL PLAN**

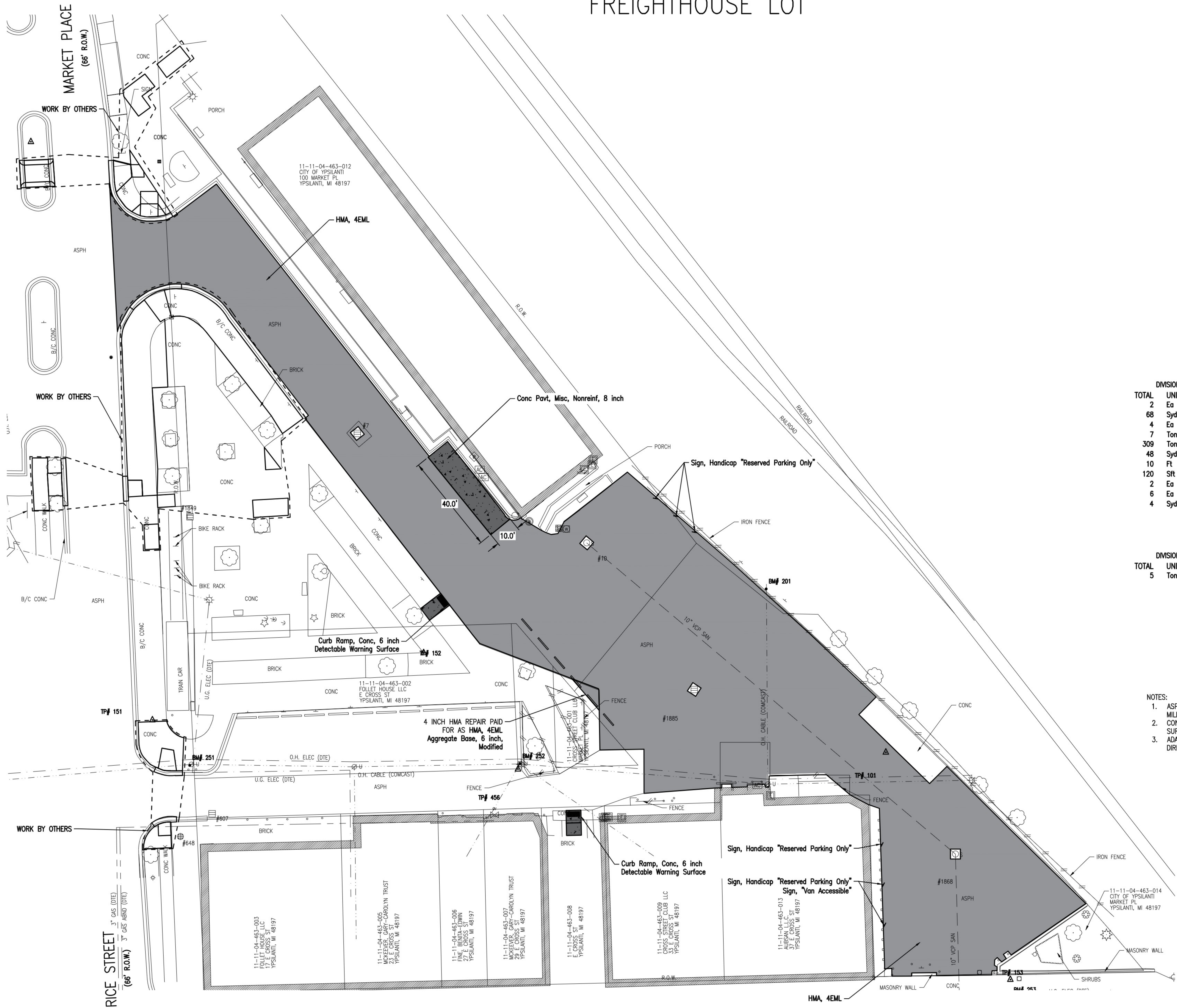
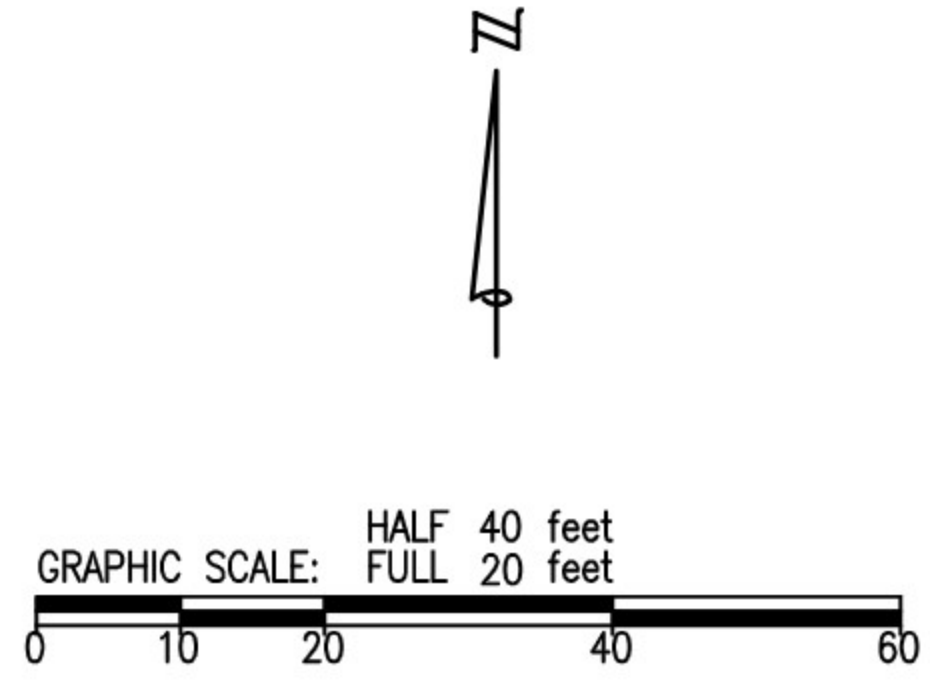


Know what's below.  
Call before you dig.

DRAWING PATH: P:\0005\_0100304\250070\_Behnd.Ltd\_RehabilitateFreighthouseLotPlan\_Conc.dwg April 14, 2025 2:23 PM

COPYRIGHT © 2026 OHM. ALL DRAWINGS AND WRITTEN MATERIALS APPEARING HEREIN CONSTITUTE THE ORIGINAL AND UNPUBLISHED WORK OF OHM AND THE SAME MAY NOT BE DUPLICATED, DISTRIBUTED, OR DISCLOSED WITHOUT PRIOR WRITTEN CONSENT OF OHM

# FREIGHTHOUSE LOT



**DIVISION B - QUANTITIES THIS SHEET**

TOTAL	UNIT	DESCRIPTION
2	Ea	Erosion Control, Inlet Protection, Fabric Drop
68	Syd	Aggregate Base, 6 inch, Modified
4	Ea	Utility Structure Cover, Adj, Case 1
7	Ton	Hand Patching
309	Ton	HMA, 4EML
48	Syd	Conc Pavt, Nonrein, 8 inch
10	Ft	Detectable Warning Surface
120	Sft	Curb Ramp, Conc, 6 inch
2	Ea	Sign, "Van Accessible"
6	Ea	Sign, Handicap "Reserved Parking Only"
4	Syd	Surface Restoration, Modified

**DIVISION C - QUANTITIES THIS SHEET**

TOTAL	UNIT	DESCRIPTION
5	Ton	HMA, 4EML

- NOTES:**
1. ASPHALT SHALL BE POURED WITHIN 2 DAYS (48 HOURS) OF MILLING OPERATIONS.
  2. CONTRACTOR SHALL PROVIDE POSITIVE DRAINAGE ON ASPHALT SURFACE. INLETS SHALL BE THE LOW POINT IN THE PAVED AREA.
  3. ADA SPACES SHALL HAVE A MAXIMUM SLOPE OF 2% IN ALL DIRECTIONS.

ISSUED FOR	CHANGE ORDER NO. 1	DATE
8/26/2025 BID SUBMITTAL		
03/04/2025 ADDENDUM NO. 1		
04/07/2025 CHANGE ORDER NO. 1		

PROJECT NUMBER: 089425-0070  
 CITY OF YPSILANTI  
 BALLARD LOT REHABILITATION  
 YPSILANTI, MI  
 CONSTRUCTION PLAN

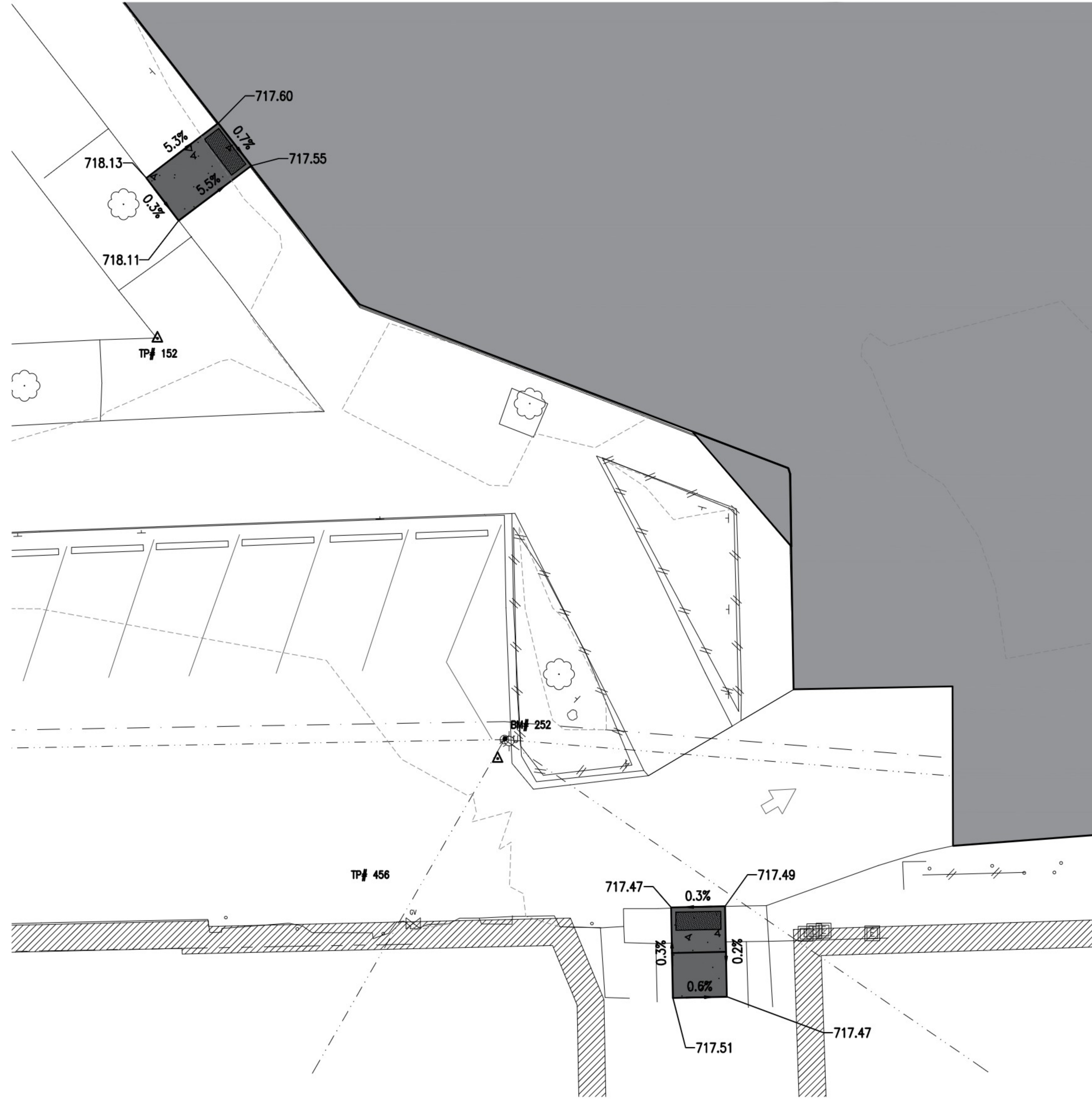
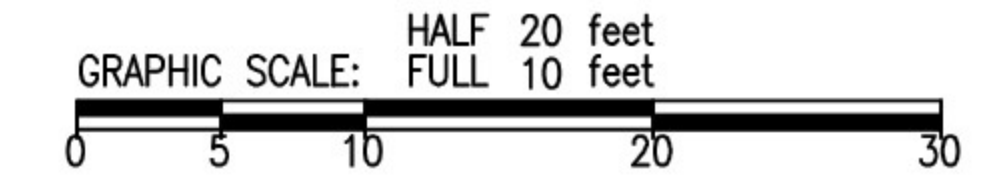


Know what's below.  
Call before you dig.

DRAWING PATH: P:\0005\_010004\0894250070\_Ballard\_Lot\_Rehabilitation\Drawings\Civil\Plans\_Concrete\200711\CON.dwg April 14, 2025 - 2:19 PM

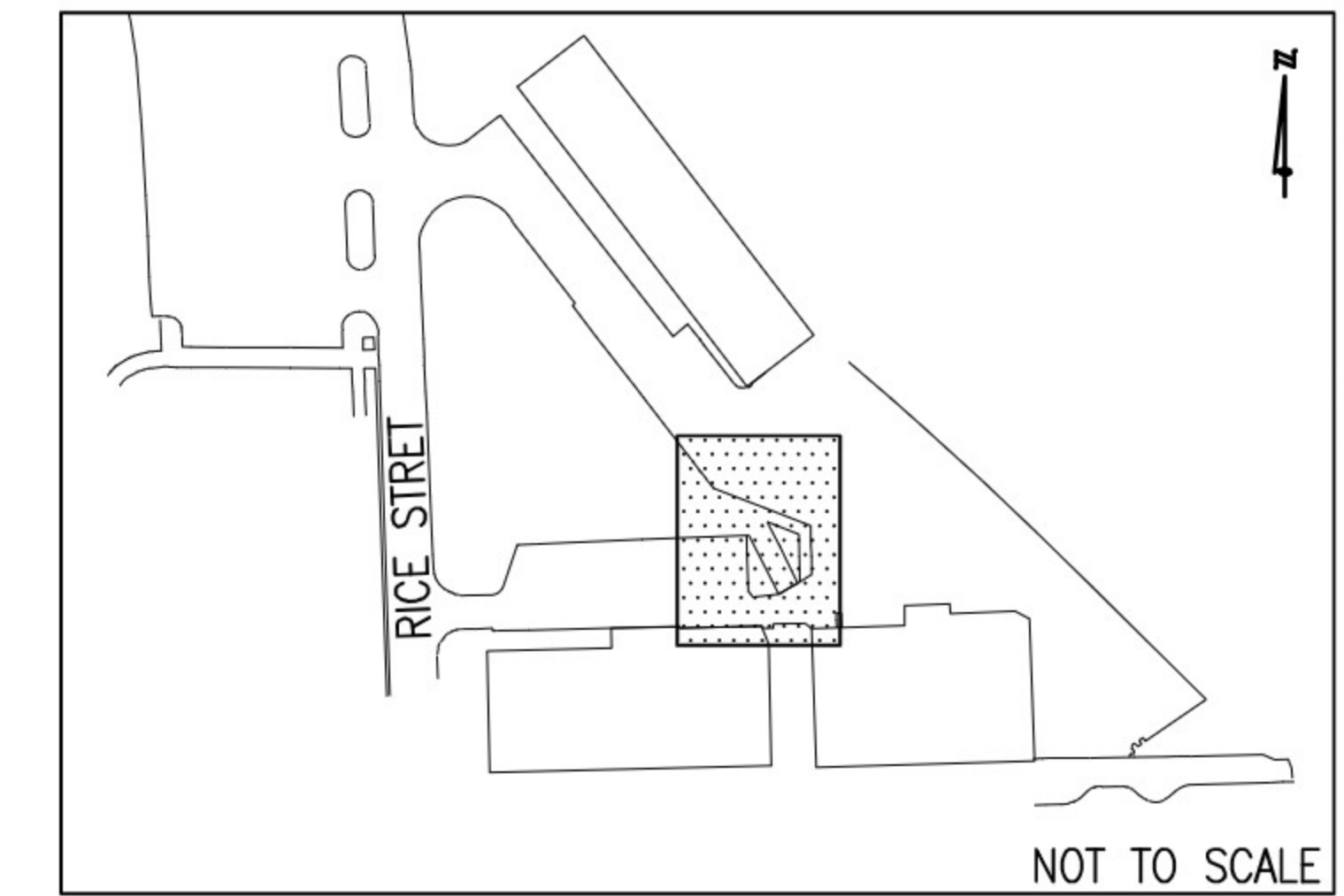
COPYRIGHT © 2026 OHM. ALL DRAWINGS AND WRITTEN MATERIALS APPEARING HEREIN CONSTITUTE THE ORIGINAL AND UNPUBLISHED WORK OF OHM AND THE SAME MAY NOT BE DUPLICATED, DISTRIBUTED, OR DISCLOSED WITHOUT PRIOR WRITTEN CONSENT OF OHM

# FREIGHTHOUSE LOT



### LEGEND

- TC TOP OF CURB
- EP EDGE OF PAVEMENT
- ES EDGE OF SHOULDER
- G GUTTER
- EW EDGE OF WALK
- T/CAST TOP OF CAST
- HP/LP HIGH POINT/LOW POINT



Know what's below.  
Call before you dig.

ISSUED FOR	CHANGE ORDER NO. 1	DATE
REVISION	DESCRIPTION	DATE
02/20/25	BID SUBMITTAL	
03/04/25	ADDENDUM NO. 1	
04/07/25	CHANGE ORDER NO. 1	

PROJECT NUMBER: PM RU  
084-25-070

CITY OF YPSILANTI  
FREIGHTHOUSE LOT REHABILITATION  
YPSILANTI, MI

ADA GRADING PLAN